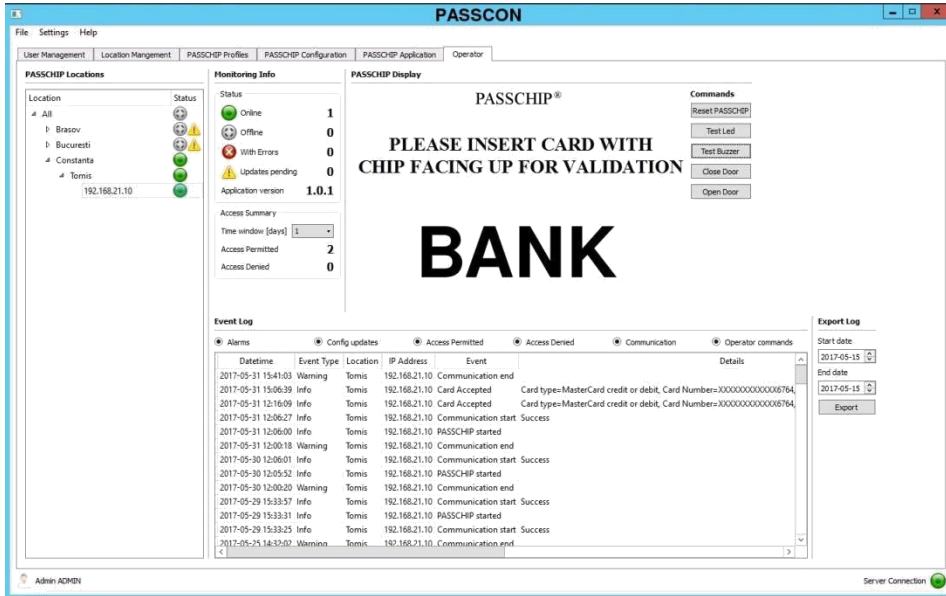


PASSCON®

Management Software

This product is the complete management solution for PASSCHIP ATM entry lobby/vestibule readers, integrating the real time monitoring with the provisioning and configuration functions. It is mainly dedicated to large number of site installations.

It allows multiple level hierarchy classifications (eg. area, city, street and site). Provides a powerful yet intuitive interface to manage and monitor the PASSCHIP readers.



Functions

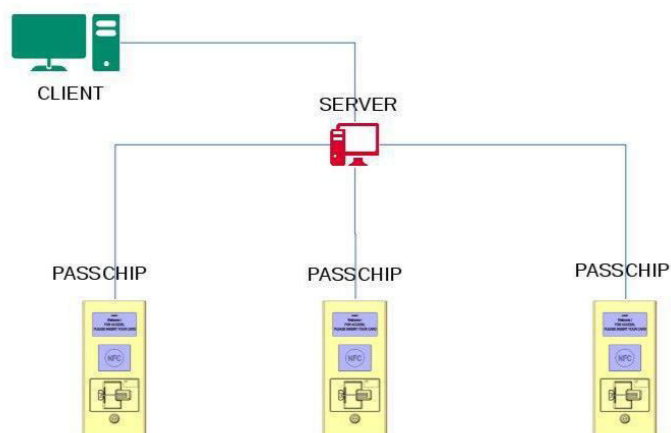
- Client Server architecture
- PASSCHIP monitoring
- PASSCHIP configuration
- PASSCHIP Centralized Log collection and management
- PASSCON user rights and management
- Email Alerts

Benefits

- Centralized management of PASSCHIP ATM entry lobby/vestibule
- Easy configuration changes by using PASSCHIP Configuration Profiles
- Remote firmware updates Summarized monitoring information
- Different users can have different access rights
- Secure communications between PASSCON Server and PASSCHIP

ATM readers.

Installation



Licensing

Standard License 200 PASSCHIPs
 Extra (incremental) package of 100 PASSCHIPs

Technical Specifications

PASSCON Server Hardware Requirements

Communication	Ethernet 100Base-TX / 1000Base-T
Memory	4 GB
Processor	x64 Quad Core @2Ghz
Operating System	LINUX, Windows 7, Windows 2008 Server, Windows 2012 Server
Storage	250 GB
Display resolution	1280x1024

Database Hardware Requirements

Storage	10 MB / PASSCHIP / year
Type	Microsoft SQL, MySQL
Communication	Ethernet 100Base-TX / 1000Base-T
Memory	4 GB
Processor	x64 Quad Core @2Ghz

Client Hardware Requirements

Memory	2 GB
Processor	x64 Dual Core
Communication	Ethernet 100Base-TX / 1000Base-T
Operating System	Windows 7, Windows 8.1, Windows 10