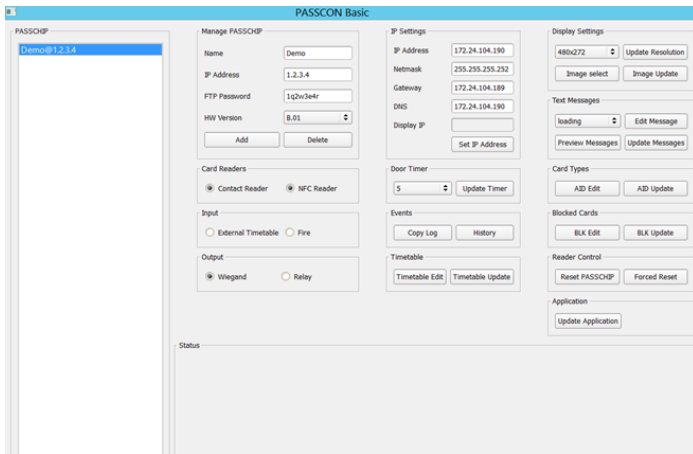




# PASSCON®

## Basic



Represents an advanced programming and configuration tool for PASSCHIP range of self service ID chip readers.

It provides an user friendly interface that simplifies the PASSCHIP control.

Offers a centralized Ethernet administration, using unique software functions for all the network; important savings are made in terms of time and specific resources of the security managers.

Facilitates PASSCHIP integration with CCTV, fire and intrusion detection through Wiegand, Ethernet and Serial interface.

### Main Functions

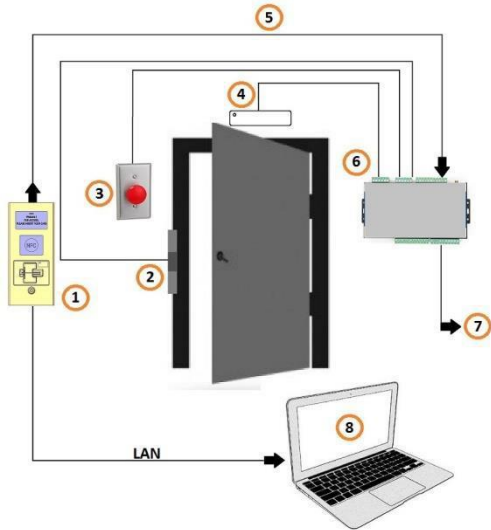
- Complete IP control: Configuration, Administration, User Management, Monitoring and Recording
- Centralized network upgrade of readers while running using an user friendly interface
- Centralized access to internal PASSCHIP history resources, including sincronized time stamp
- Centralized cards' management, including BLACK LIST

### Benefits

- Protection of customers during self-service procedures
- Protection of ATMs and banking assets against unauthorized usage
- Extremely reliable product with an excellent ROI rate
- Proven long life service
- May be integrated with third parties security software, including biometric applications
- May be linked and integrated with CCTV, fire and intrusion detection
- Excellent substitute to human guard patrol service

**Installation**

Configuration example of PASSCHIP with door module:



- 1 = PASSCHIP;
- 2 = Door lock;
- 3 = Exit button;
- 4 = Door magnetic sensor;
- 5 = Communication between readers and control unit;
- 6 = Control unit;
- 7 = Wiegand communication to an external access control system;
- 8 = PC with PASSCON Basic parameterization software via Ethernet

**Technical Specifications**

Computer Requirements	Windows XP or higher Intel CORE 2 or higher 32 MB of RAM 100 MB HDD free space CD ROM player, keyboard and mouse
PC Configuration	Max number of connected PC with running PASSCON software: 1 with basic license, unlimited according additional licensing
Panels Configuration	Max number of panels on administration platform: unlimited(limited functions) Max number of panels on graphical platform: 100, unlimited according additional licensing
Users Configuration	Max number of simultaneous users: 1, unlimited according additional licensing
Communication with PASSCHIP	Ethernet
Transfer of parameterization	On line, during PASSCHIP functioning
NTP	YES
Black list management	YES, online programable for maximum 1 000 card profiles
Panels' History Log access	YES, limited to 5MB, aprox.10 000 events with time stamp (panel's capacity)
Language	English

**Ordering Information**

- PASSCON BASIC: Administration platform software, unlimited number of panels, one user
- PASSCON GUI: Administration graphical software 0->100 panels, one simultaneous user
- GSSACDU: Upgrade option for GSSACD: 100->unlimited panels, one simultaneous user
- SMUS: Additional simultaneous user for GSSACD