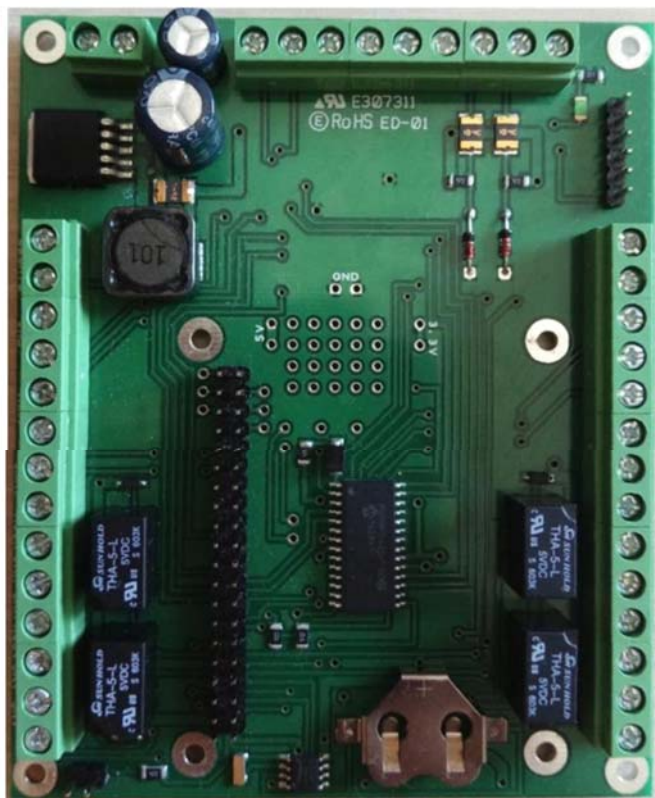


PASSCHIP



PASSCHIP® Access Controller

This product is a powerful networked door module giving the advantages of IP centralized control and event reporting.

It is mainly dedicated to large office buildings and industrial plants, with possibilities of usage in banks, commercial, law enforcement agencies, telecom and other organizations for secure and efficient access in sensitive areas.

May be used with any Wiegand format card readers with up to 64 bits of data.

It is standard delivered with a solid TCP/IP interface for fast and continuous communication with the administration software application.

PASSCHIP Access controller is specially designed for flexible installation in most severe environment conditions, being the most suitable solution for using anywhere in the world with minimum maintenance costs.

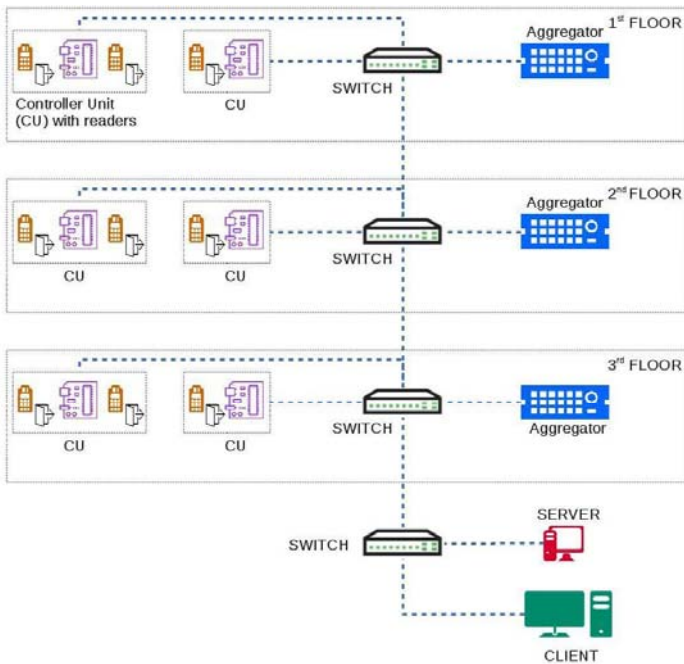
Functions

- Automatic protection against unauthorized access in sensitive zones or any other protected areas
- Compact dimensions installed inside tamper-proof solid metal case 12V power source
- Ready in 2 doors or 4 doors variants
- Each door may have 2 Wiegand card readers (1IN/1OUT) Dedicated powerful management software
- Centralized IP network upgradable while running using an user friendly interface

Benefits

- Protection of people and assets
- Extremely reliable product with an excellent ROI rate
- Proven long life service
- May be integrated in new or existing access control installations
- May be linked and direct integrated with PASSCHIP Intercom for an efficient door to door or door to dispatch center communication
- Centralized integration with fire detection system for automatic door release
- Excellent substitute to human guard patrol services

Installation



Observations

Each Aggregator handles monitoring and configuration for up to 20 Controllers. Server communicates directly with aggregators.

Any Wiegand Readers can be used, including PASSCHIP LPR Readers

Ordering Information

ACDM 100/2: Access control 2 door module
 ACDM 100/4: Access control 4 door module
 PASSCON Basic - Parameterization software
 PASSCON GUI - Client –Server administration software

Technical Specifications

| Control Unit | |
|--------------------------------|---|
| Communication | Ethernet 100 Base-TX/10Base-T Wiegand up to 64 bit between to card readers |
| Memory | Internal DRAM 1 GB SD slot available 1xMMC Real time clock with back-up Li-Ion maintenance free battery |
| Processor | ARM 64-bit, 1.2 GHz, Quad |
| Operating System | Linux OS |
| Software Upgrade | On line, during functioning |
| Power Supply | 12Vcc/3Ah |
| Power Consumption | Max. 30 W |
| Network configuration | Up to 1000 Controllers/50 Aggregators |
| Door configuration | Up to 4.000 Doors/8.000 readers |
| Cards | Up to 100.000 |
| Areas | Up to 1.000 |
| Access Profiles | Up to 10.000 |
| Construction | Applied mount in metal case |
| Agency Approvals and Standards | CE Conformity |
| Ambient conditions | Operating Temp:-30 C +50 C Storage Temp:-35 C +60 C Humidity: 10-95% |
| Size of panel (W x H x D) | 138 x 312 x 124 mm -Applied model |
| Weight | 3.90 Kg with power source |
| Protection Class | IP67 |
| Aggregator | |
| Communication | Ethernet 100 Base-TX/10Base-T |
| Memory | Internal DRAM 1 GB SD slot available 1xMMC |
| Processor | ARM 64-bit, 1.2 GHz, Quad |
| Power Supply | 85-264 VAC, 45-65 Hz |
| Power Consumption | Max. 10 W |